



SmartSVN - SVN Client

SmartSVN is a stand-alone, graphical client for the version control system *Subversion* (SVN), the designated successor of CVS.

SmartSVN supports you when developing software projects, documentation projects, website projects or any other projects which consist of a number of related files: it helps your team to coordinate access to your project and to track changes over time.

SmartSVN is easy to use for new SVN users and powerful for advanced users. Users of SmartCVS, our graphical CVS client, will find switching to SVN using *SmartSVN* very easy. Various convenient features help you to make working with SVN more efficient and comfortable.

Multiplatform

With *SmartSVN* you are not limited to a specific platform, so you won't need to learn

different tools for all the platforms you are using. *SmartSVN* works in the same comfortable way on every platform you like: MS Windows 2000/XP/Vista, Linux, Mac OS X.

Everything Out-of-the-Box

With *SmartSVN* you get a complete SVN client solution. No need to install command line executables. No need to install a file compare tool. No need to install special server-add-on's to browse the repository.

Best Overview

SmartSVN has been designed with the same proven concept of SmartCVS: it displays the directory structure and files of one project in one large window.

The central part of this window is a combination of a directory tree with a file table. This gives you a clear and reliable overview of the most important information of your project data. Details can still

be accessed quickly:

The file table shows (by default) all files from subdirectories to help you not to forget to commit file changes in deep directory structures. The information displayed for each file can be configured to match your needs without overwhelming you.

Directory icons differ depending on the state of files and directories in (maybe invisible) subdirectories, so even property changes on directories can't be missed.

Using this concept makes it possible to concentrate on the core task: to make managing your projects with SVN as easy and as powerful as possible for you.

Smart Features

Various smart features are built on top of the core Subversion commands to give you exactly those information that you currently require.

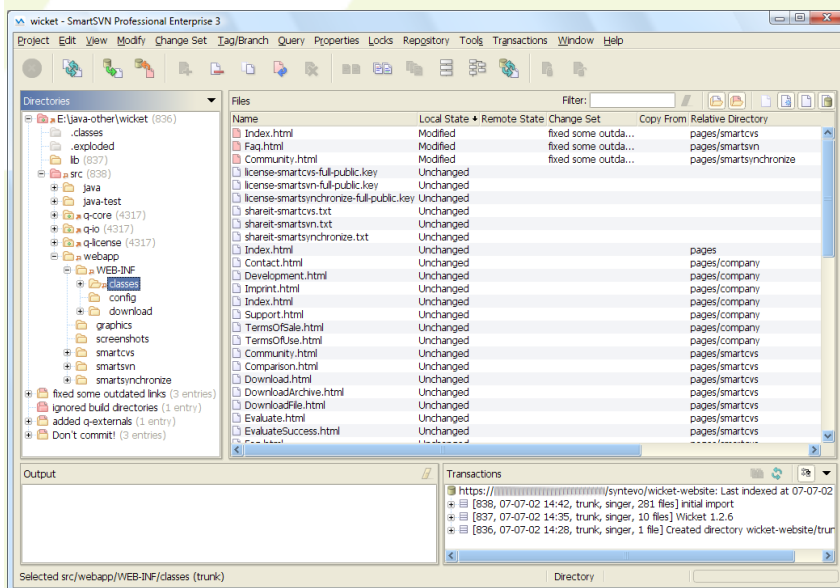
Transaction View

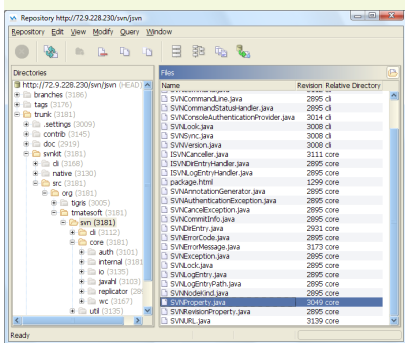
The Transaction view automatically fetches information on new revisions from the repository.

It will keep you informed about any commit that happened to your project - automatically and clearly and even from other branches, if you like.

Comfortable URL Handling

With *SmartSVN* you can handle tags and branches as intuitive as if they were a na-

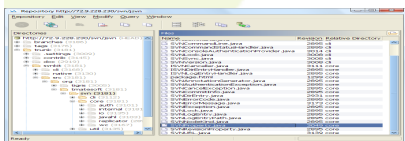




...tive Subversion feature. Once you have defined the project's repository layout, you won't need to remember nor even enter long URLs anymore. Just create and work with tags and branches as you know it from other version control systems, e.g., CVS.

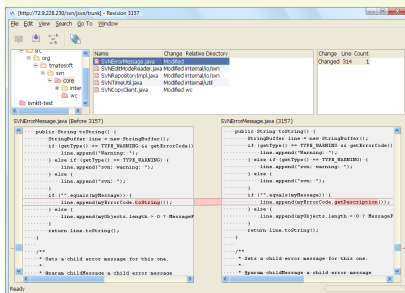
Repository Browser

With the Repository Browser you can directly browse into the structure of your repository.

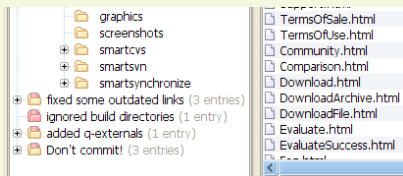


You can create new directories or move/copy existing ones, remove old files and directories, display Logs, Revision Graphs or annotate files. And of course, you can also check out files or directories from the Repository Browser.

Change Report and Change Sets



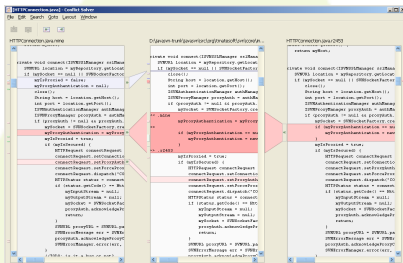
The Change Report is an optimized "multi-file-compare". From within the Change Report, files can be directly assigned to Change Sets.



Change Sets allow you to organize these files (and directories) into groups of related changes. Committing your changes in task-oriented portions helps your team to better understand them when checking the log.

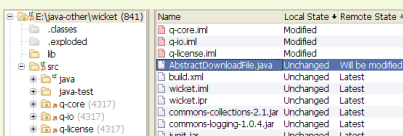
Built-in Conflict Solver

Even in a perfectly coordinated project it happens that two people independently change the same part of a file. Such a conflict needs to be solved manually.



The built-in Conflict Solver combines the freedom of a general three-way-merge with the special ability to detect and easily resolve such conflicts.

Remote State

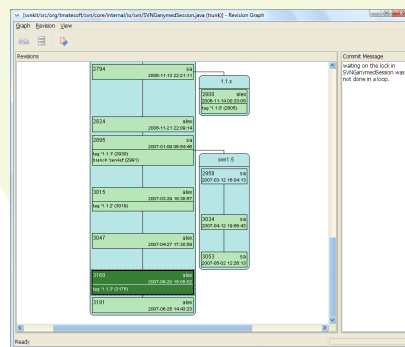


In the directory tree you can instantly see which directories contain local modifications (orange arrows) and which directories contain

remote changes (within the repository, green arrows). In combination with the Remote State of the files you can detect and avoid potential conflicts before they actually occur.

Revision Graph

The Revision Graph shows the complete family tree for a file or directory.



It provides similar operations as the Log command like comparing two revisions of a file, but surpasses the Log in detail level and presentation.

Combination does the trick

To make working even more efficient, SmartSVN combines features and integrates functionality where it is possible: E.g., use the Repository Browser where you need to select a path, open the Revision Graph and find the correct revision using the Change Report from within ...

Try It Out!

Complete your picture of SmartSVN and try it out yourself: www.smartsvn.com

Contact information

SyntEvo GmbH
Brunnfeld 11
83404 Ainning
Germany
www.syntevo.com